



Wireless Electricity Monitor

Save up to 20% on your electricity bill through greater awareness!



- Take control of your energy use
- Monitor the cost of using your home appliances and lights
- Discover and reduce the size of your carbon footprint
- Learn about energy with your family

Also Includes:
ENERGY EFFICIENCY
GUIDE

efergy

HOW TO USE

Having the information instantly in front of you is an effective way of cutting back and saving energy:

- See instantly cost in £/hour of the electricity used in your home
- See instant savings when you turn an appliance or light off
- Check the display before leaving the house and see if you have left something on

ENERGY EFFICIENCY GUIDE

The guide is included to help you monitor the information displayed, and outline some simple techniques to help you spot money saving opportunities

INSTALLATION

The Wireless Electricity Monitor can be safely installed in minutes with no need for expert knowledge or assistance.

- 1 Locate the meter box and clip the sensor around the live outgoing supply cable. Attach the sender box and fix to the wall with the pads provided.
- 2 Simply link the devices together and place the portable display in any room of the home.



Portable Display Unit



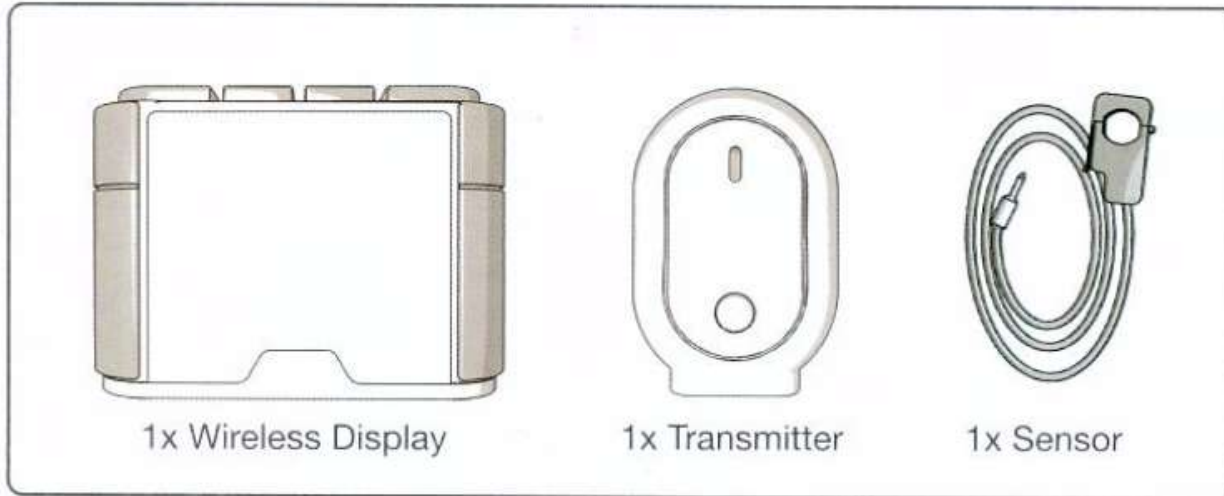
Monitor every electrical appliance in every room of your home including... TV's, DVD, Hi-Fi, PC, Desk Lights, Dishwashers, Fridge Freezers, Microwave Ovens, Blenders, Food Processors, Kettles, Toasters, Telephones, Boilers, Heaters & Coolers, Home Gadgets, Electric Cookers, Electric Hobs, Coffee Machine, Tumble Dryers, Washing Machines etc.



efergy

quick start guide

What's in the box:



Also included: Energy Efficiency Guide (Booklet).

8 EASY STEPS FOR INSTALLATION & SET UP

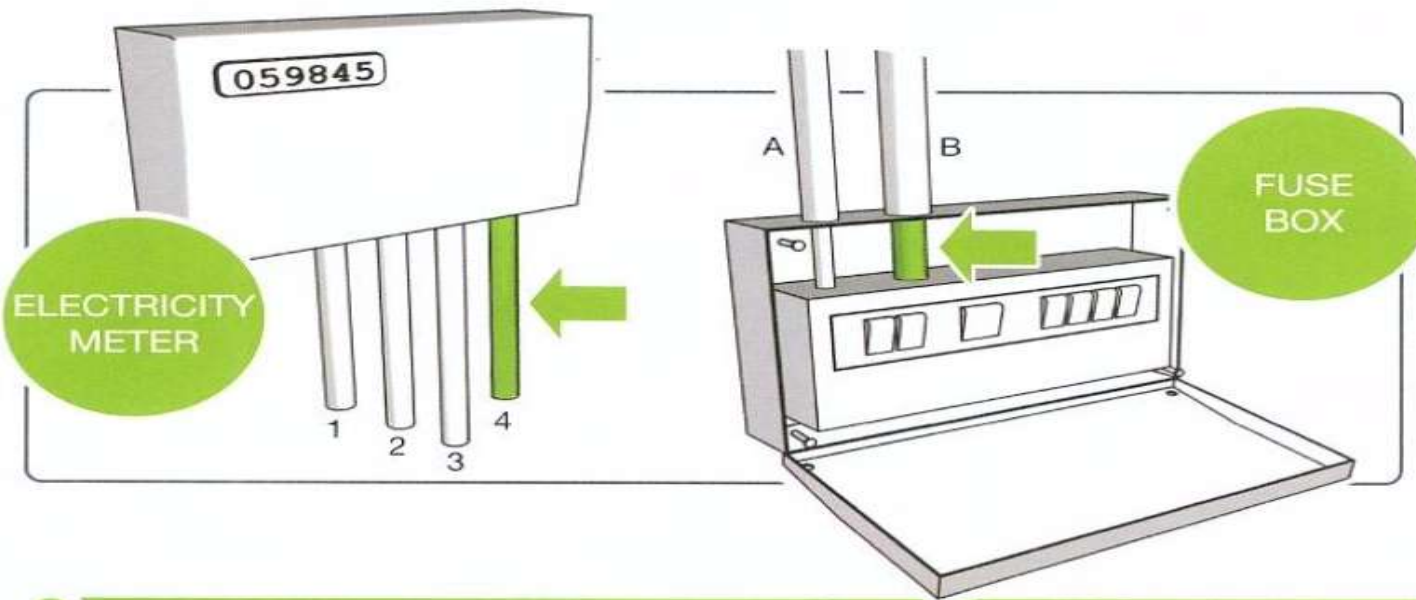
1

LOCATE LIVE FEED WIRE

Identify which of the below your home uses:

ELECTRICITY METER: Fit the sensor to the feed cable (cable 4) on your electricity meter. This should be the last cable on the right if looking face onto the meter.

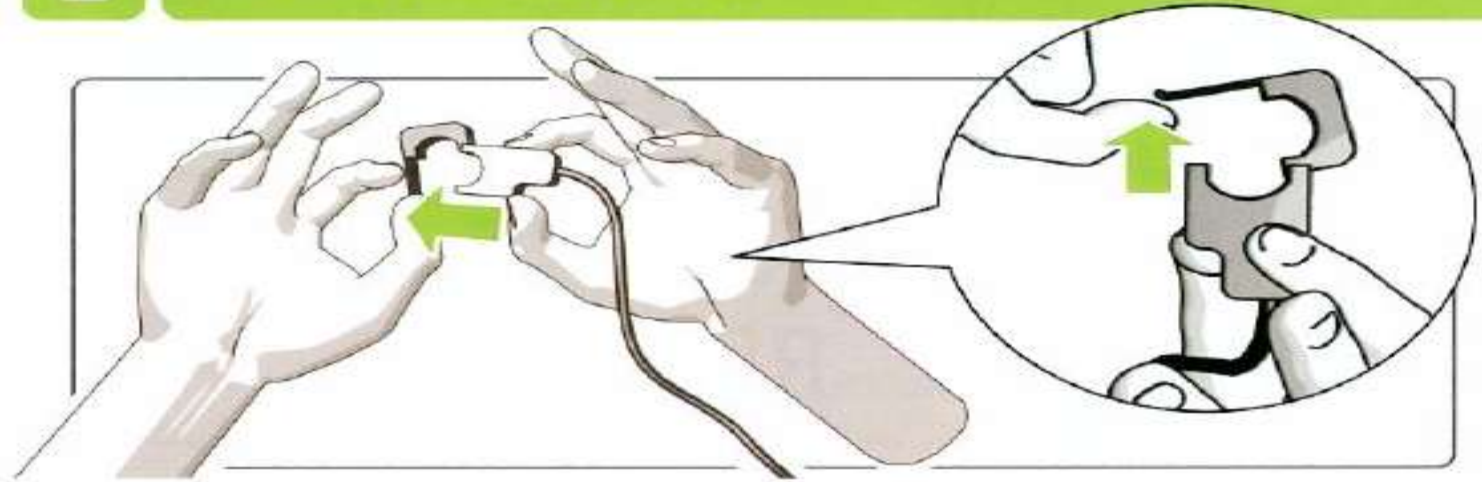
FUSE BOX: Unscrew fusebox cover and fit the sensor to the feed cable (cable B). This is normally coloured black, brown or red.



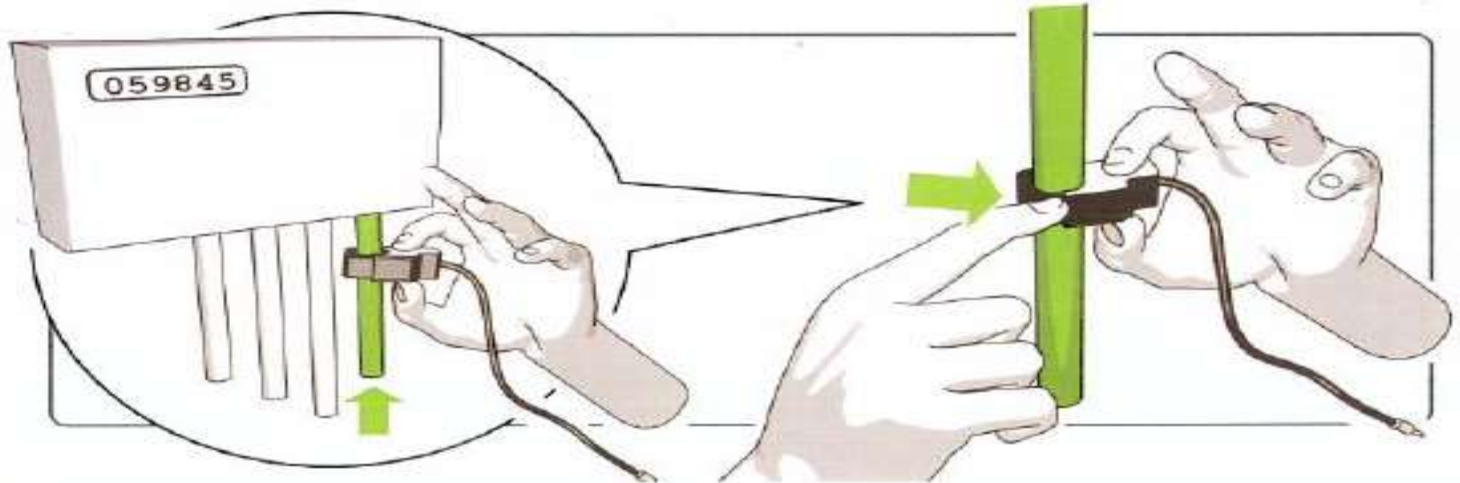
IF YOU ARE CONCERNED ABOUT INSTALLATION, PLEASE CONTACT AN ELECTRICIAN. ENSURE CABLES ARE NOT DAMAGED. DO NOT CUT CABLES

2

ATTACH THE SENSOR

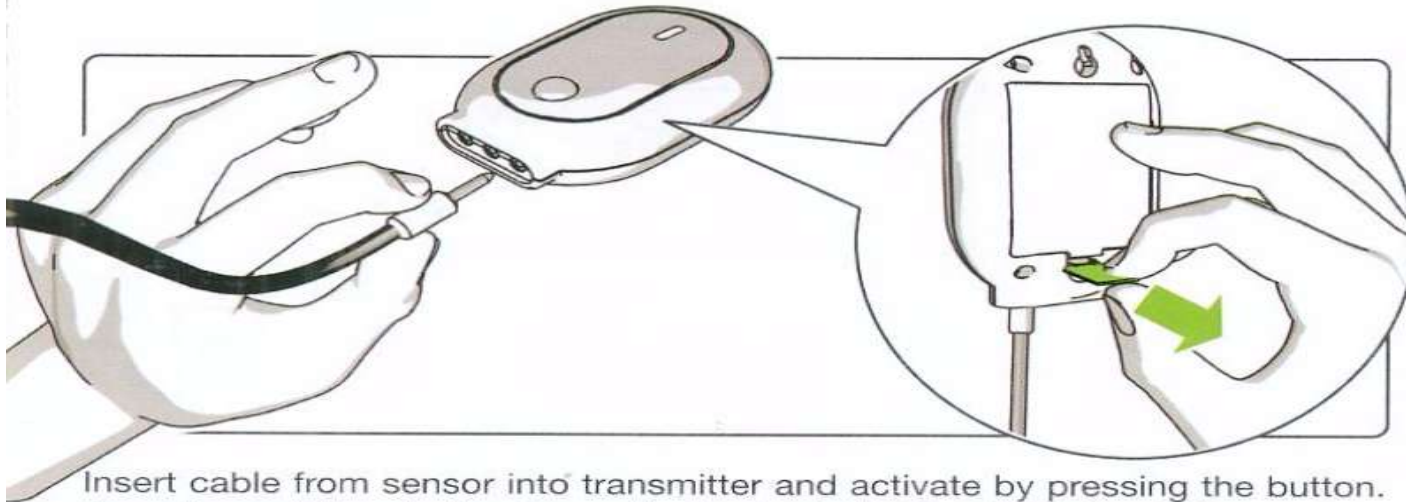


Push open the cap to release the sensor. Place sensor around the feed cable and push shut. You will hear it "Click" when closed securely.



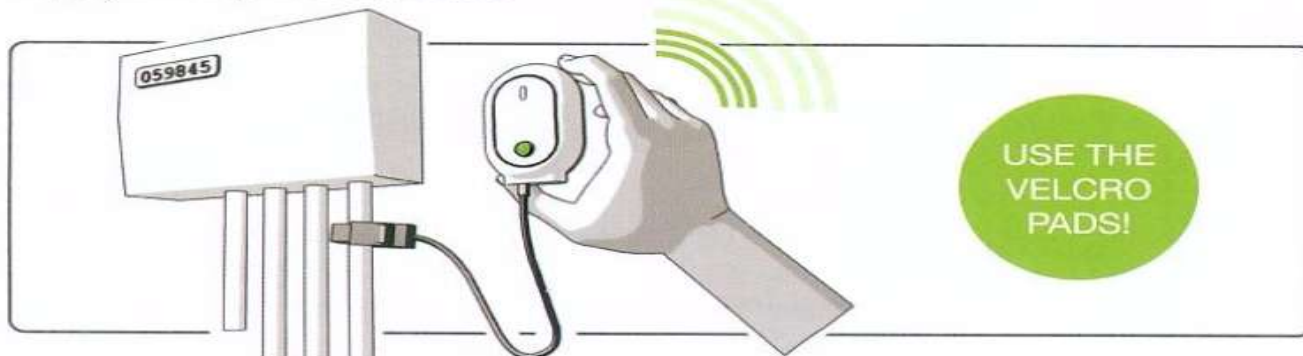
3

ACTIVATE THE TRANSMITTER



Insert cable from sensor into transmitter and activate by pressing the button. To activate pull the plastic slip on the back. A flashing light should be seen on the front of the display.

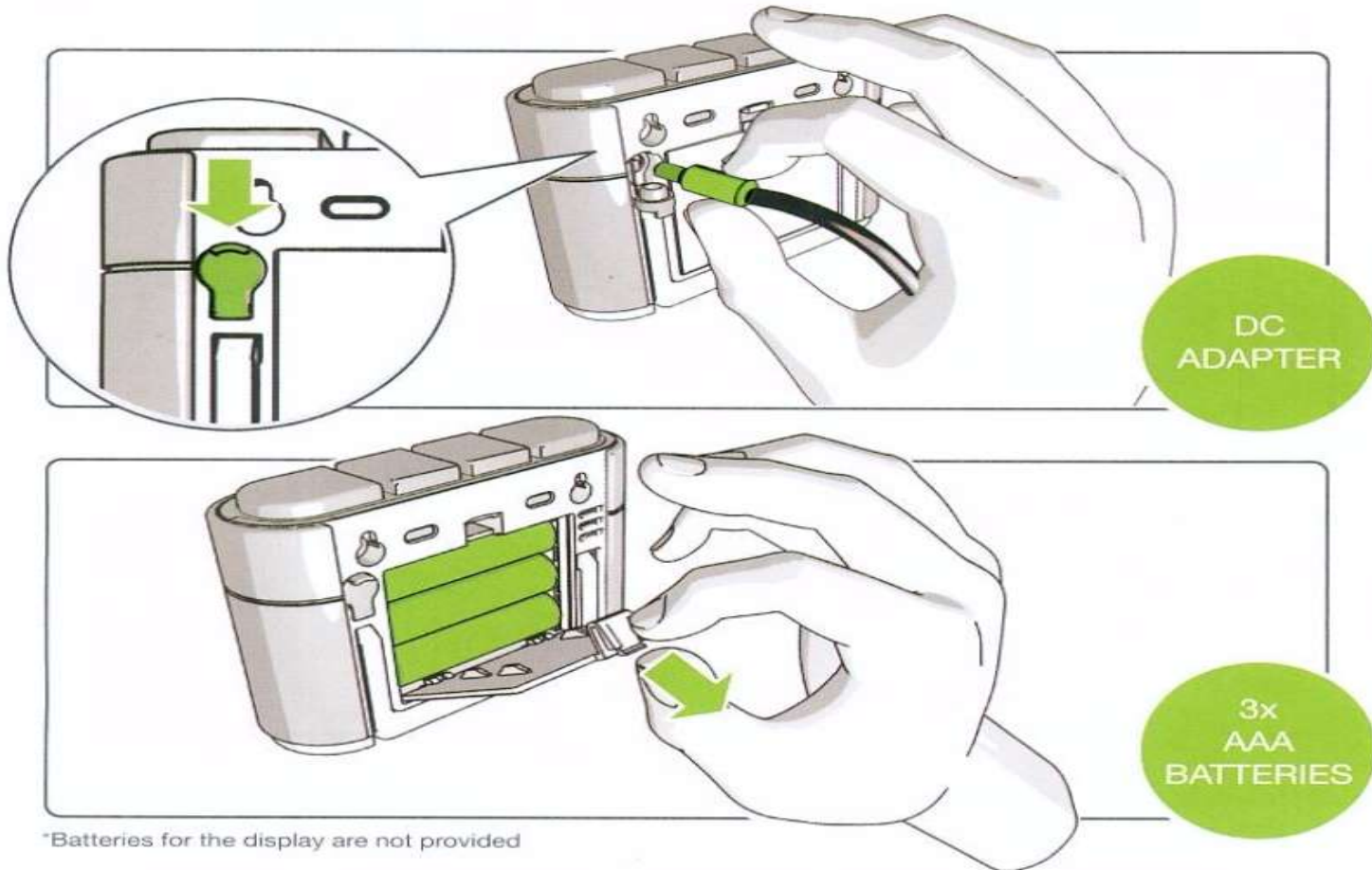
Mount near meter with Velcro pads provided. The transmitter has a power supply already inside the unit.



4

POWER UP THE DISPLAY

There are two ways to power the display: the DC adapter or batteries.

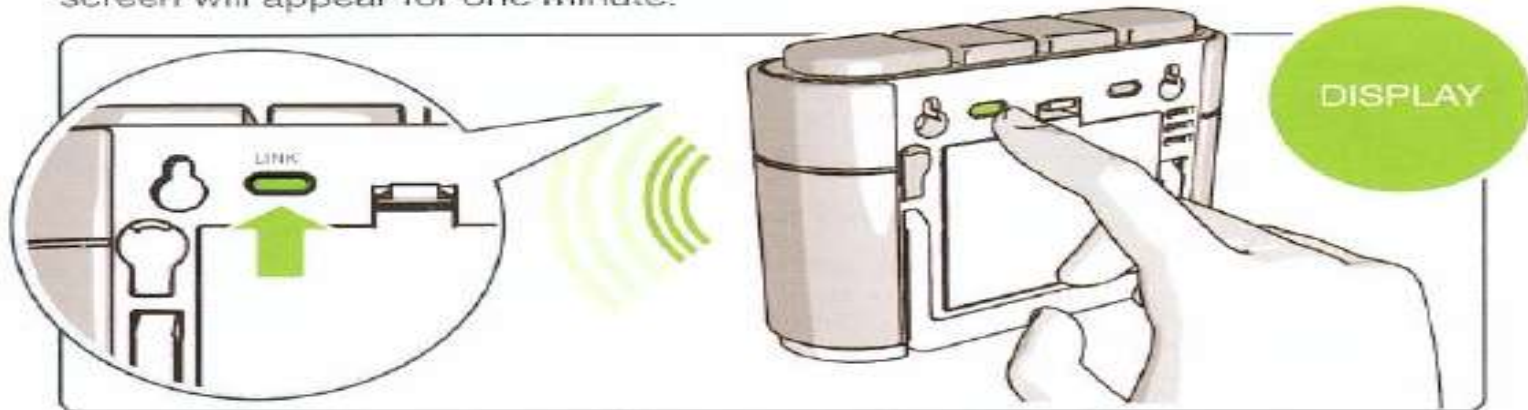


*Batteries for the display are not provided

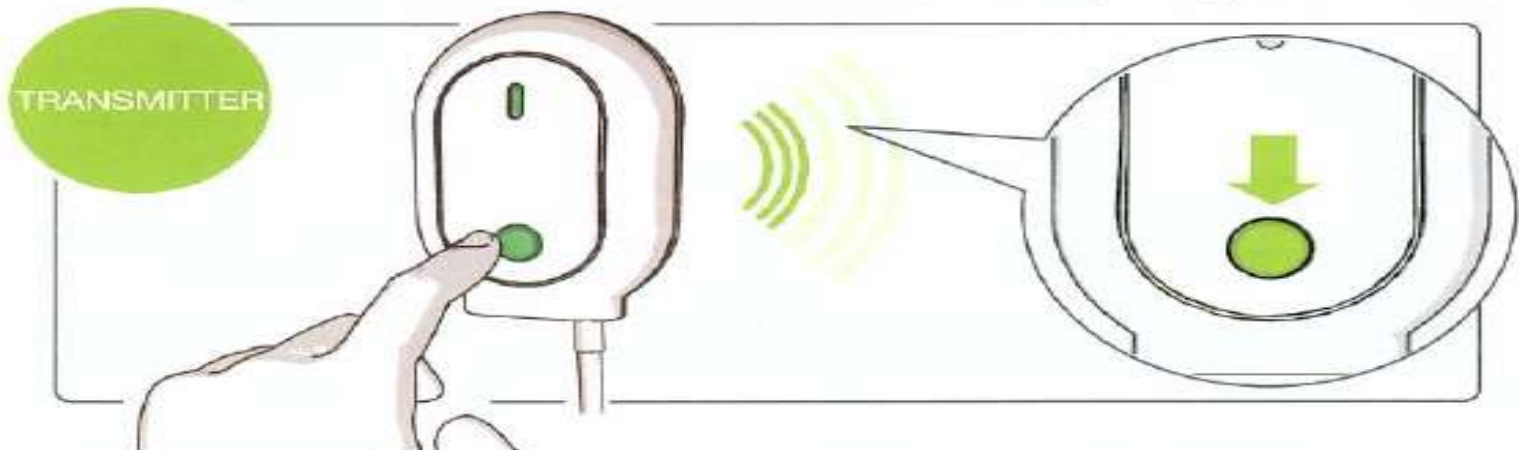
5

LINK THE TRANSMITTER AND DISPLAY

Push the button located on the back of the display unit. The LINK icon on the screen will appear for one minute.



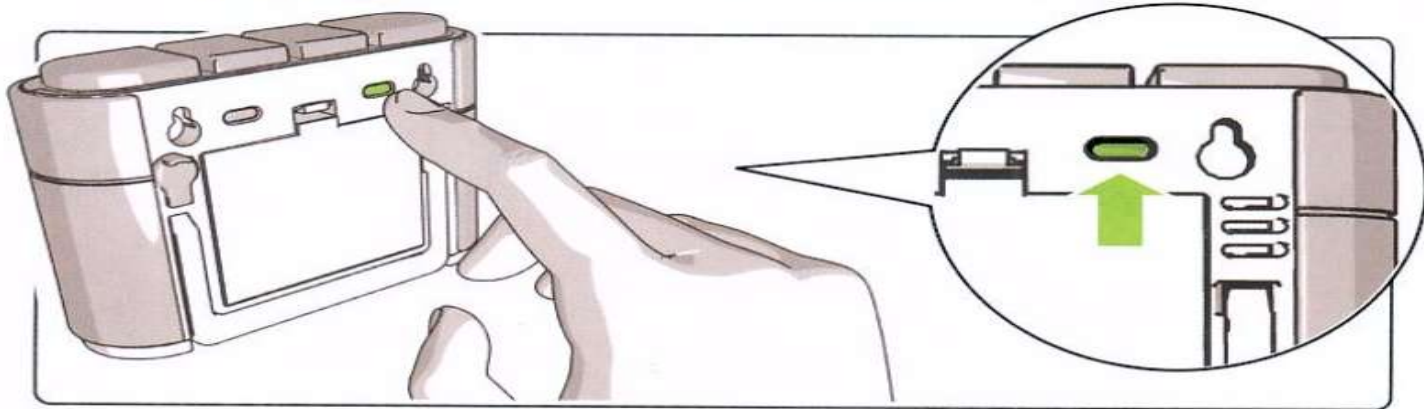
Press the green button located on the transmitter to complete synchronisation.



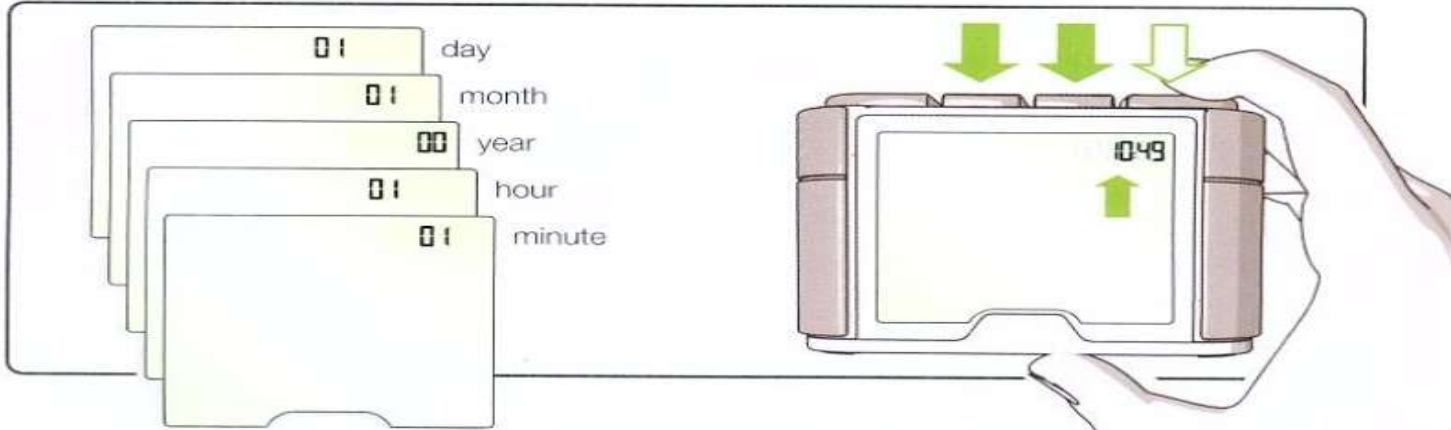
6

SETTING THE TIME AND DATE

Find the **TIME SET** button located on the back of the display. Hold for 2 secs.



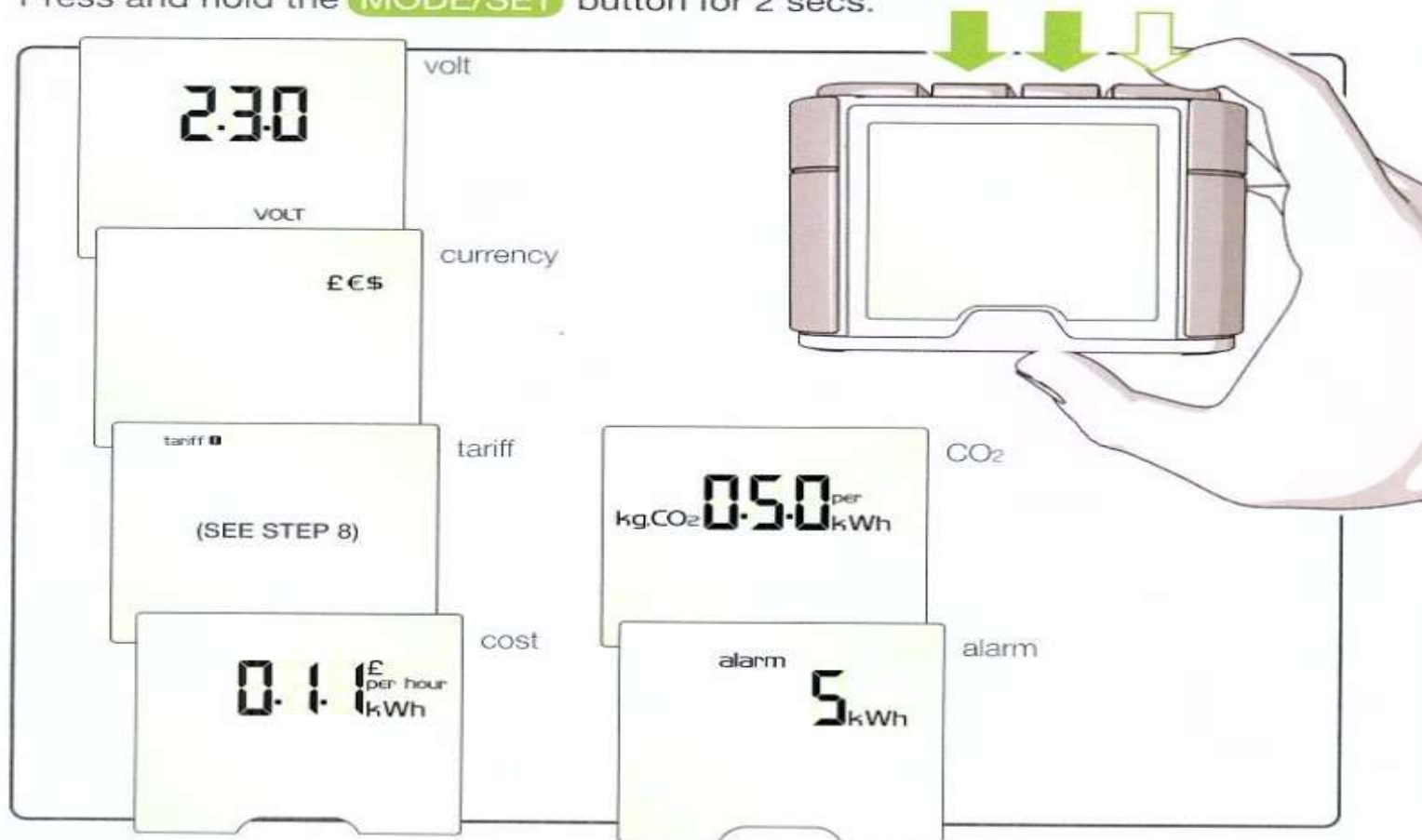
Use the **BWD** and **FWD** buttons to set the numbers. Press the **MODE/SET** button located at the top of the display to move to the next setting.



7

SETTING OTHER INFORMATION

Press and hold the **MODE/SET** button for 2 secs.

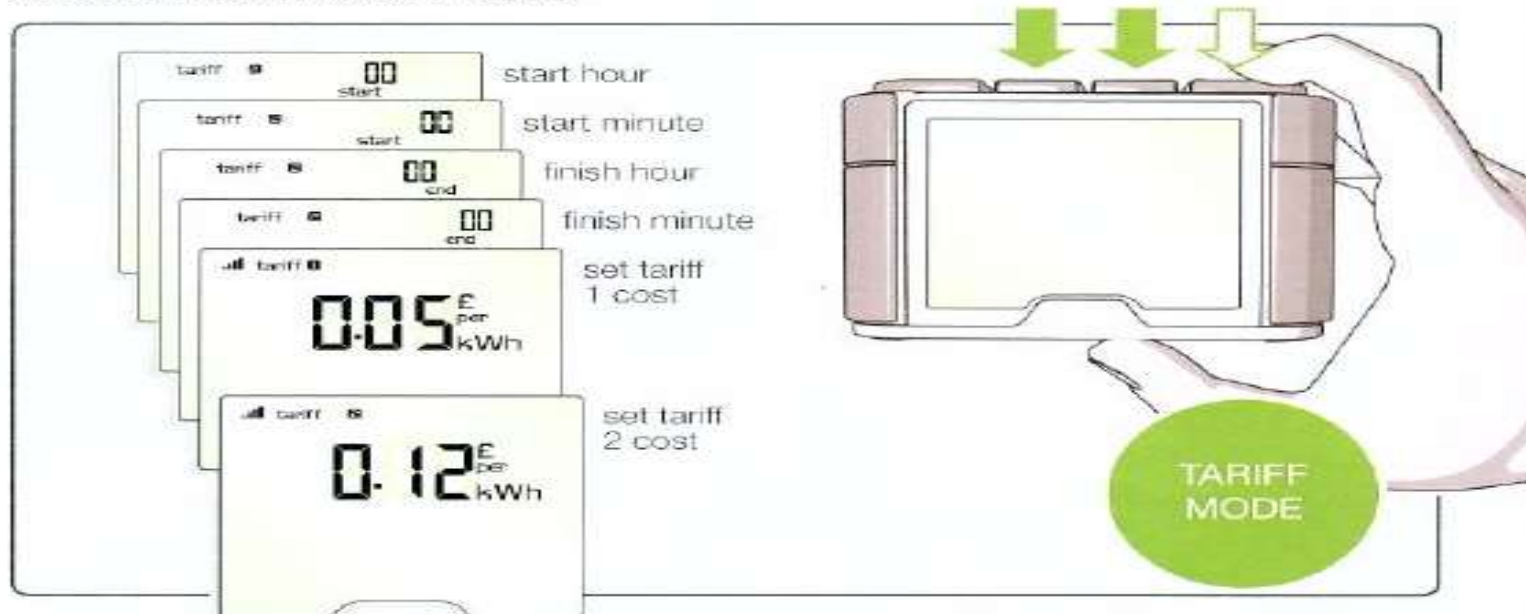


Use the **BWD** and **▲** buttons to set the numbers. Press the **MODE/SET** button located at the top of the display to move to the next setting.

8

SETTING THE DUAL TARIFF

Press and hold the **MODE/SET** button for 2 secs. Press **MODE/SET** two more times to find the TARIFF mode.



Press the **FWD** then the **MODE/SET** button

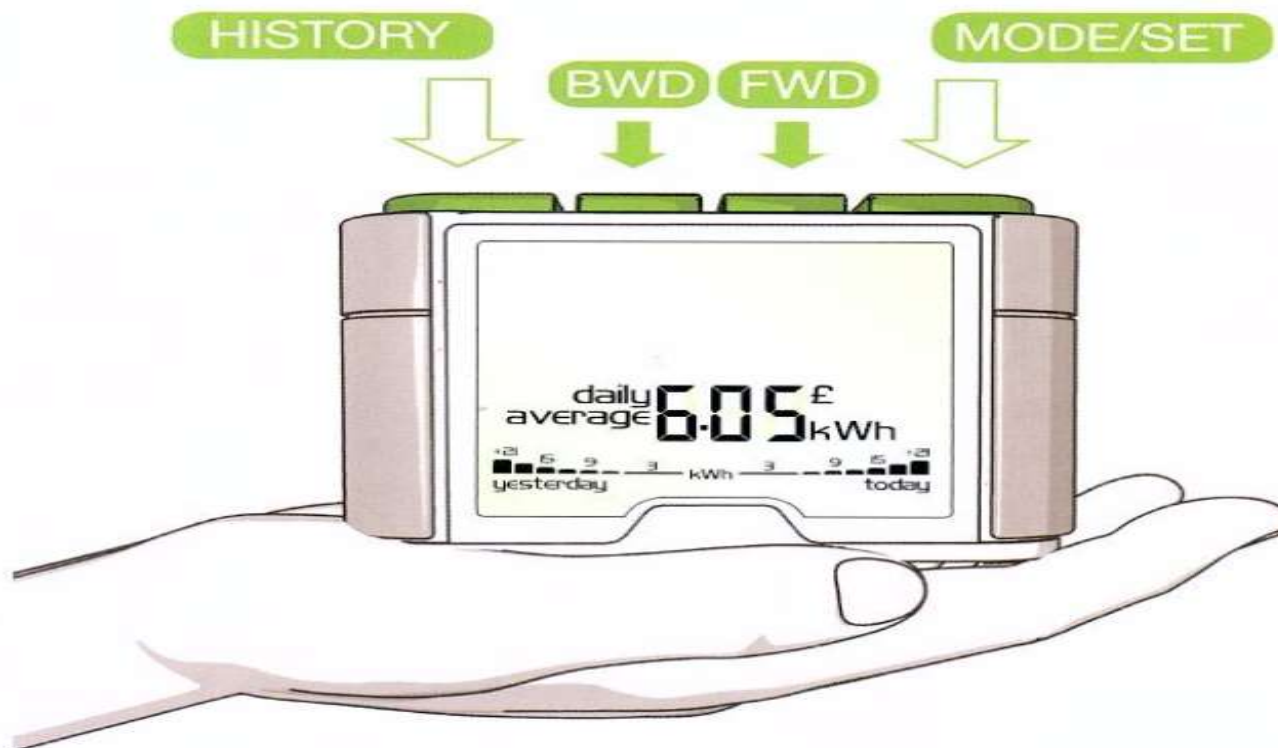
Use the **BWD** and **FWD** buttons to set the numbers. Press the **MODE/SET** button located at the top of the display to move to the next setting.



YOU WILL ONLY NEED TO USE THIS SETTING IF YOU HAVE A DUAL OR "ECONOMY 7" TARIFF.

ABOUT THE DISPLAY

The efergy eLite shows INSTANT, AVERAGED and HISTORICAL information .



The DAILY AVERAGE information and the GRAPH are always visible regardless of if it is in INSTANT or AVERAGED mode. Press the **MODE/SET** button to change the DAILY AVERAGE units from kWh to Cost.

The **INSTANT** mode calculates consumption levels and costs **PER HOUR**. It updates every 6 or 12 seconds.

**INSTANT
MODE**

Battery warnings:

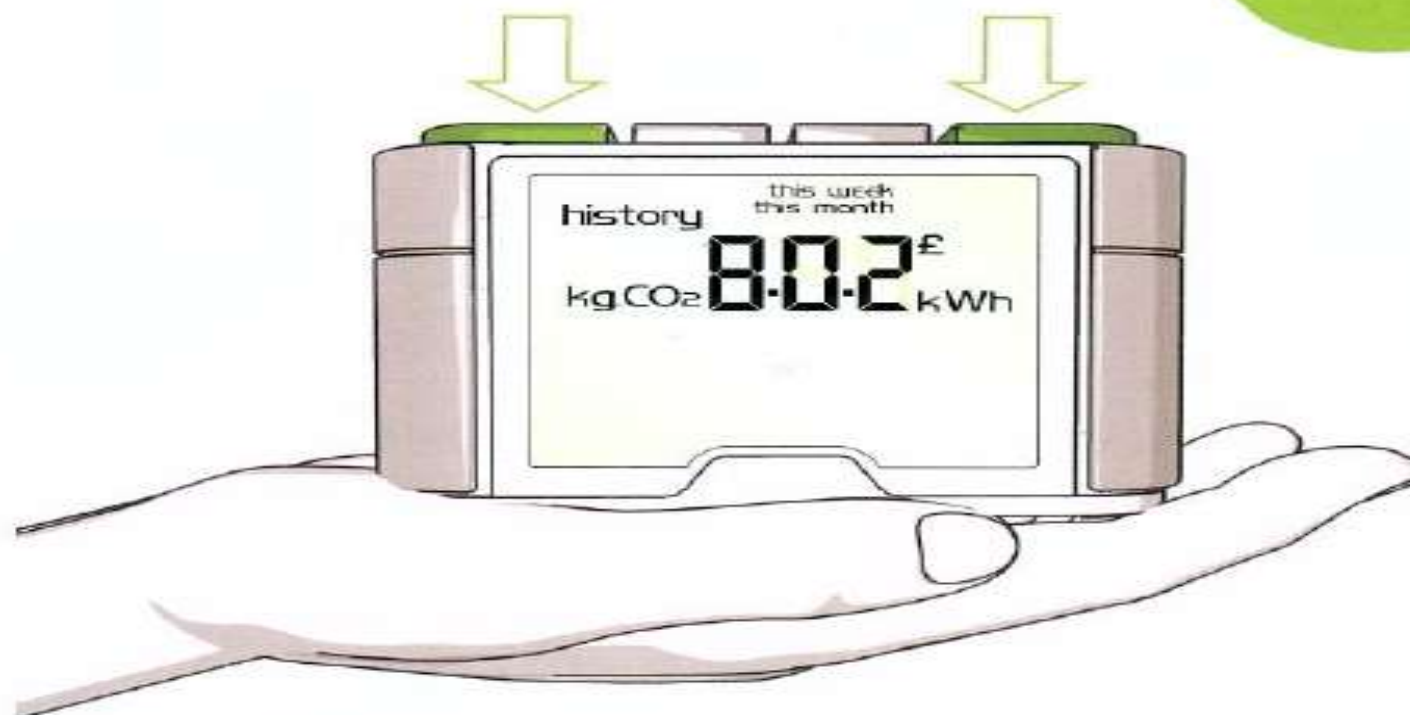
- 📶 Transmitter
- 📺 Display
- Alarm on 📢



Push the **MODE/SET** button to change the units from kWh to Cost.

The **HISTORY** mode allows access to the information stored on the display from previous weeks and months.

**HISTORY
MODE**



Push the **HISTORY** button to access DAILY, WEEKLY and MONTHLY information.

Push the **MODE/SET** button to change the units from kWh to Cost and CO2 emissions.